

# Toolkit

HELPING YOU CARE FOR YOUR GOD-GIVEN GIFTS | ISSUE 4, 2025

## MORE YOUNG ADULTS ARE READING THE BIBLE

Research and anecdotal evidence indicate a slight shift: **young Christians who desire a deeper and more authentic spiritual connection are returning to church or visiting for the first time.** Christianity Today reports that while the reading habits of 18-29-year-olds have remained mostly the same over the past three years, more young men are reporting engagement with Scripture, and **Bible reading is up 29% among American millennials, now in their 30s and early 40s.** Millennials' reading habits lean print-heavy, though they also use digital tools, like apps on their phones. Meanwhile, Gen Z Christians are the least likely to read a printed Bible.

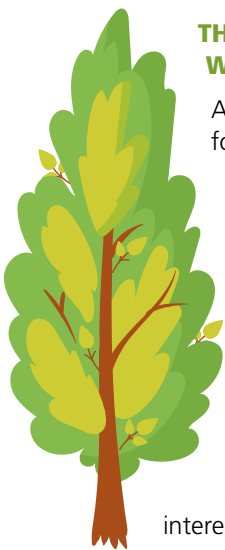


## NEARLY A QUARTER OF AMERICANS LIVE PAYCHECK TO PAYCHECK

New data from the Bank of America Institute shows that **almost a quarter of American households are living paycheck to paycheck.** Wage growth in lower- and middle-income households hasn't kept up with the rate of inflation this year, meaning **the cost of goods has grown faster than income in some portions of the country.** The data is based on a sample of U.S. households that primarily bank with Bank of America. The survey defined living paycheck to paycheck as a household's "necessity spending" – which it categorized as childcare, gas, groceries, housing, insurance, and more – exceeding 95% of their income.

## THE NATIVE TRIBE HELPING REHABILITATE ATLANTIC WHITE CEDAR TREES

Andre StrongBearHeart is the Tribal Historical Preservation Officer for the Hassanamisco Tribe of Nipmuc Nation in Massachusetts, and the founder of No Loose Braids, a nonprofit that teaches indigenous cultural practices and land stewardship. WBUR reports that **he brought attention to the dwindling supply of Atlantic white cedar trees in Nipmuc territory.** The cedar saplings are used to build traditional dwellings, called wetu. StrongBearHeart's nonprofit and Mount Grace Land Conservation Trust teamed up to advocate for the trees, and **the state is assisting in rehabilitating a white cedar swamp.** The effort has brought together an array of scientific experts, land trusts, state agencies and Nipmuc organizations, and the team is developing a framework to guide conservationists interested in doing similar work in other tribal lands.



## FUNDRAISING PROFESSIONALS GATHER FOR EVERENCE DEVELOPMENT CONFERENCE

More than 230 fundraising professionals and nonprofit leaders from all over the country gathered Sept. 23-25, 2025, in Lancaster, Pennsylvania, for the biennial Everence® Development Conference. The three-day event **provided development professionals with insights from speakers, relevant workshops and networking opportunities for professional and meaningful conversations.**

If your organization is looking to sharpen its fundraising efforts, or motivated to approach fundraising as a ministry, **the Everence Development Conference is designed for executive directors, board members and other faith-focused nonprofit leaders,** and offers new insights from engaging speakers and proactive practices. Learn more at [everence.com/development-conference](https://everence.com/development-conference).

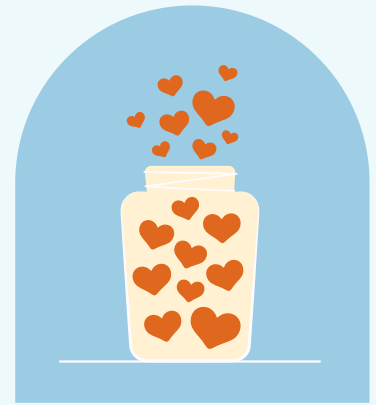


Everence®

## A REVERSAL IN PEANUT BUTTER ADVICE HELPED PREVENT ALLERGIES



Ten years ago, a study showed **feeding peanut products to infants could prevent the development of life-threatening allergies.** New research, published this year, found the original study made a huge difference. According to PBS News, **peanut allergies began to decline in the U.S. after guidance issued in 2015 recommended introducing peanuts to infants as young as 4 months old.** The rate of peanut allergies in children ages 0 to 3 fell by more than 27% and by more than 40% when recommendations were expanded in 2017. About 60,000 children have avoided developing allergies since 2015.



## EVERENCE SURPASSES 80 ACTS OF SERVICE GOAL

In celebration of its 80th anniversary in 2025, Everence set a goal of **completing 80 acts of service throughout the year.** Employees reached the milestone months ahead of schedule in July. As of Oct. 31, **employees have completed 121 acts of service,** supporting a wide range of community needs, like packing and serving meals, mentoring students, and landscaping, among many other activities. Launched in January, the Everence-wide initiative honors the organization's founding in 1945 and its enduring values of stewardship, generosity, and faith-inspired action. Learn more at [everence.com/80-years](https://everence.com/80-years).

## FOLLOW US ON SOCIAL MEDIA



## FARMERS' ALMANAC FOLDS AFTER MORE THAN 200 YEARS

**The Farmers' Almanac announced that the 2026 edition will be its last.** The publication's website will remain operational through the end of December. The Farmers' Almanac, **not to be confused with The Old Farmer's Almanac,** its older and more-known competitor, was first printed in 1818, according to Popular Science. The publication is based in Lewiston, Maine, and has used sunspots, lunar cycles and planetary positions to generate long-range weather forecasts. The guide also includes advice for gardeners, trivia, jokes and even natural remedies.

## HOW LITTER-PICKING BECAME A SPORT

A new "sport" is drawing larger numbers of participants in cleaning their streets: Spogomi – a combination of the words "sport" and "gomi," which is Japanese for trash – is **a race to see which teams of three collect the most litter over two 45-minute intervals.** It was invented in 2008. The Japan Times reports that competitors returned to Tokyo in October 2025 for its second global competition. A total of 33 teams from around the world gathered to test their speed, teamwork and environmental awareness. **Japan claimed the world title with a total of 167 pounds of trash collected, followed by Germany in second place and Morocco in third.**



 **Everence®**  
**everence.com**  
**800-348-7468**

Toolkit is published quarterly for people who attend churches with ties to the Anabaptist faith tradition.

Everence helps individuals, organizations and congregations integrate finances with faith through a national team of financial professionals. Everence offers banking, insurance and financial services with community benefits and stewardship education. Everence is a ministry partner of Mennonite Church USA and other churches.

*Everence offers credit union products that are federally insured by NCUA. Investments and other products are not NCUA or otherwise federally insured, may involve loss of principal and have no credit union guarantee. Some Everence products and services may not be available in your state.*